

Each week's lesson will be divided into 3 parts. – Learning topic – Learning Topic Game – Sumdog skills.

It is designed to be spending a minimum of 30 minutes per day on math practice.

I recommend that you spend your first 30 minutes of the week on the learning topic with your child and introducing the game. The remainder of your child's time can be spent practicing the new topic and continuing to practice their mental math through games such as those in their Get Your Game On duotang

1. Learning Topic: Estimating Products (multiplication). – (Big Idea 4)

This week we will be learning two strategies for estimating products.

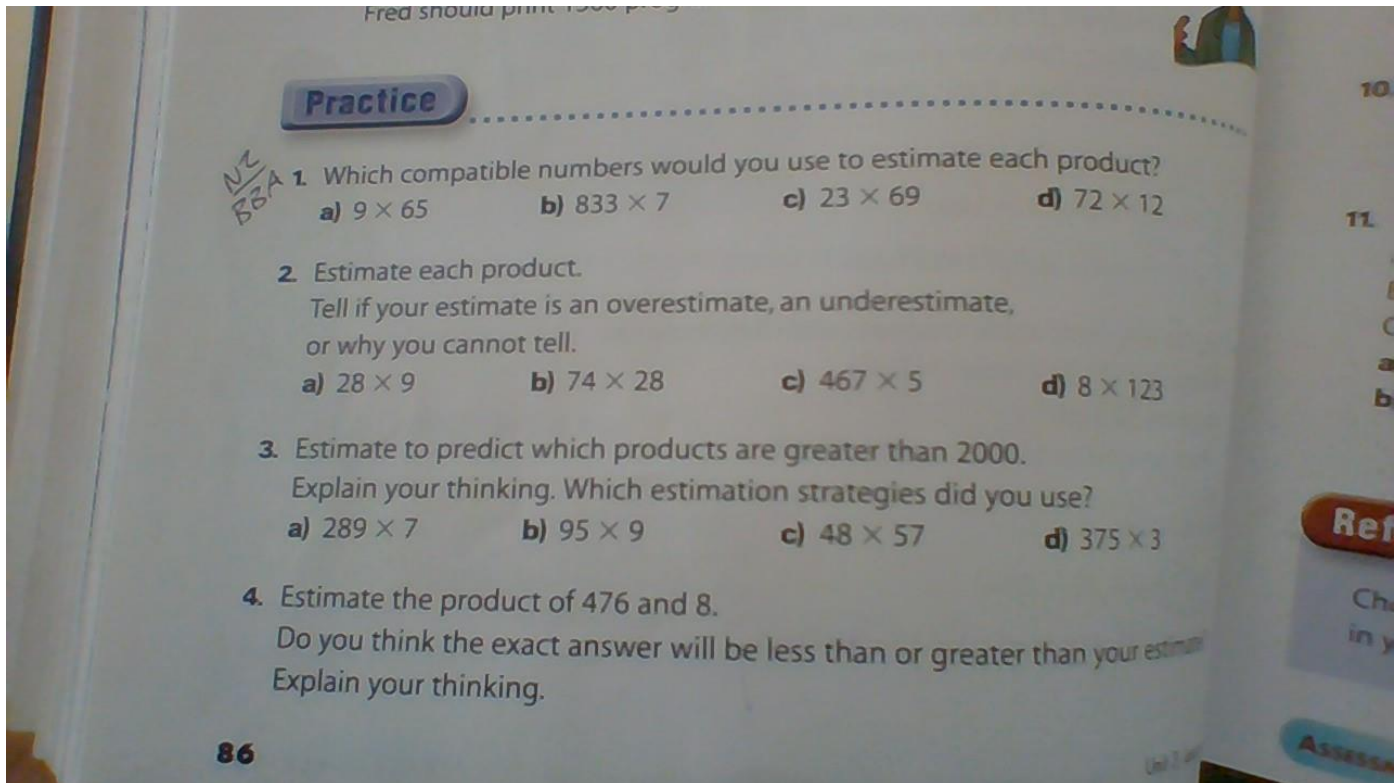
Estimating with **compatible numbers** and **front-end estimation**. We have used these strategies with addition this year and in grade 4. The difference here is that we are multiplying.

I have also put two pages from the textbook on here for practice.

My YouTube Channel link for the two videos titled Estimating products:

<https://www.youtube.com/channel/UC2nFvG3cu9sdg6tQ3woCy5g/>

2. Continue to practice skills on Sumdog and



5. Jack delivers 58 newspapers each day.
About how many papers does Jack deliver
in one week? Show your work.

6. There are 48 chairs in each row.
There are 64 rows of chairs.
About how many people can sit down?
Show your work.



7. Zoé estimated the product 245×9 .
She wrote these statements about the product.
• The product is less than 2500.
• The product is greater than 1800.
How do you think Zoé got each estimated product?
Use words and numbers to explain.

8. The students want to sell about 2000 tickets to a fashion show.
They hope to sell 425 tickets each day.
The students sell tickets for 5 days.
Do you think they will sell enough tickets?
How do you know?

9. The estimated answer to a multiplication question is 4200.
What might the question be?

10. Write a story problem for which an overestimate would be needed.
Solve your problem.
Show your work.

11. Here are 3 students' estimates of the product 93×8 .
Amal estimated 1000.
Bernard estimated 720.
Chloe estimated 950.
a) Which estimation strategy do you think each student used? Explain.
b) Without calculating the exact product, how can you tell
which estimate is closest to the exact product?

Reflect

Choose a question from *Practice* where you used compensation
in your estimate. Explain why you compensated.